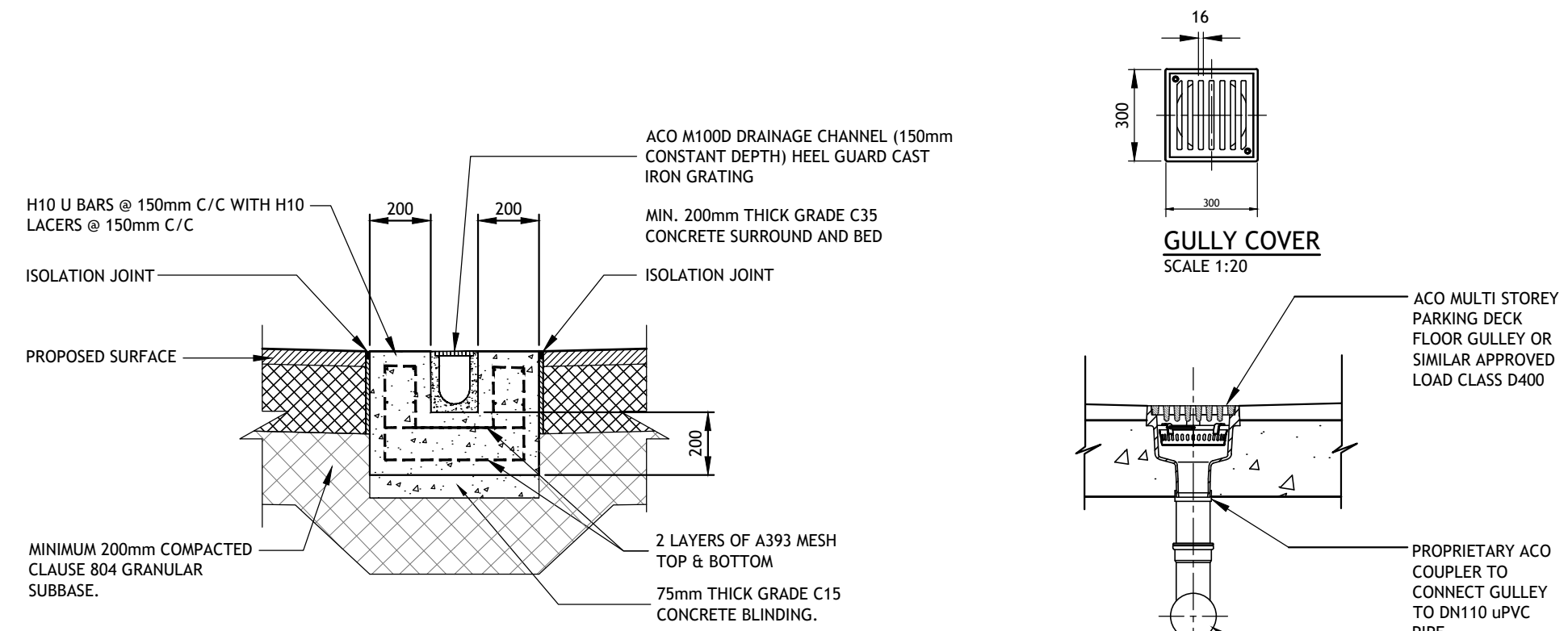
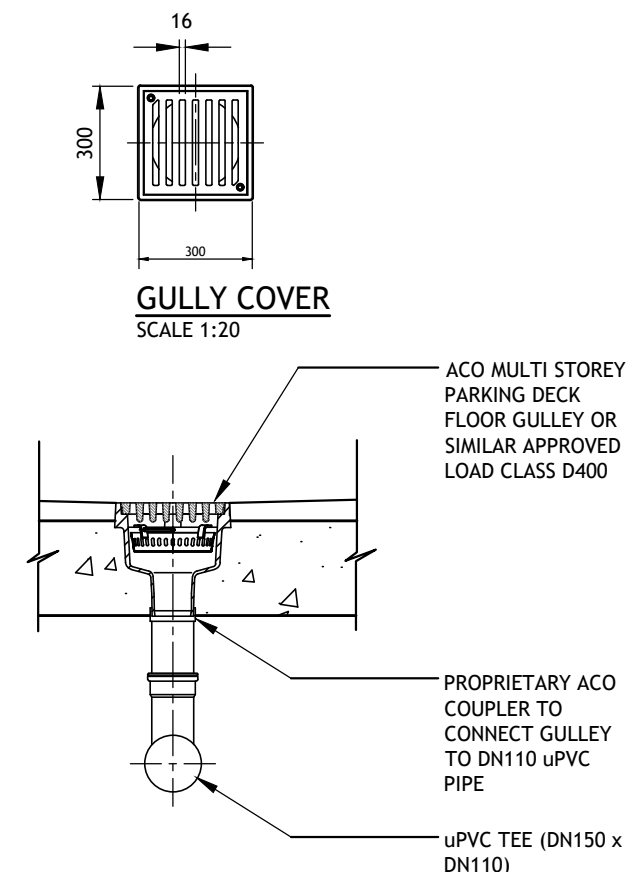


**IRISH WATER WASTE WATER STANDARD DETAILS**

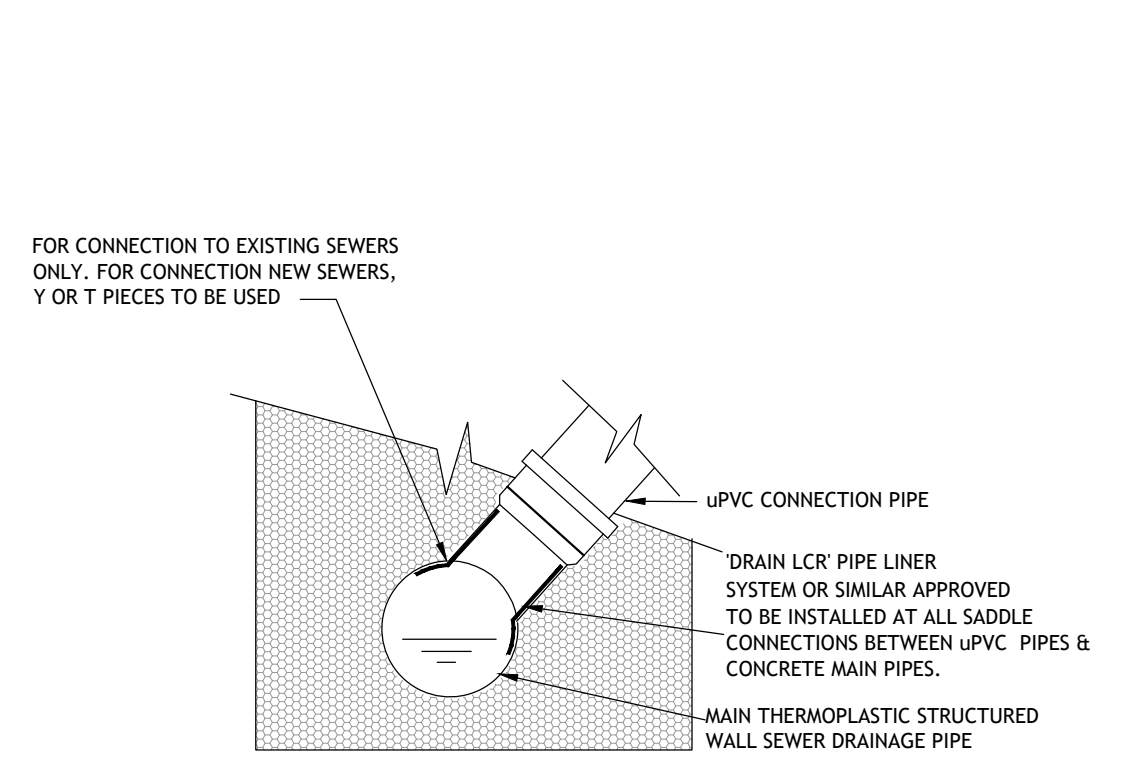
Details Required	Drawing No.	Drawing Title
Y	STD-WW-01	Waste water service connection responsibility
Y	STD-WW-02	Typical layout for sewer within new developments
Y	STD-WW-03	Drain & service connection pipework
Y	STD-WW-04	Typical sewer / service pipe connection
Y	STD-WW-05	Typical service layout indicating separation distances
Y	STD-WW-06	Restrictions on wastewater infrastructure adjacent to trees
Y	STD-WW-06A	Restrictions on new trees/shrubs planting adjacent to sewers
Y	STD-WW-07	Trench backfill & bedding
Y	STD-WW-08	Concrete bed, haunch & surround to wastewater pipes
Y	STD-WW-09	Blockwork manhole (<450mm dia.)
Y	STD-WW-10	Pre-cast concrete manhole
Y	STD-WW-11	In-situ concrete manhole
Y	STD-WW-12	Backdrop manholes
Y	STD-WW-13	Private side inspection chamber
Y	STD-WW-14	Thrust blocks for rising mains
N	STD-WW-15	Scour valve chamber (foul rising main <200mm dia.) (sheet 1 of 2)
N	STD-WW-16	Sluice valve details for rising mains ductile iron (D.I.) pipe (<200mm dia.) (sheet 1 of 2)
N	STD-WW-17	Sluice valve details for rising mains ductile iron (D.I.) pipe (<200mm dia.) (sheet 2 of 2)
N	STD-WW-18	Air valve chamber (foul rising main <200mm dia.)
N	STD-WW-19	Duct chamber
N	STD-WW-20	Emergency overflow structure
Y	STD-WW-21	Typical ditch/stream crossing for gravity main (sheet 1 of 2)
Y	STD-WW-22	Typical ditch/stream crossing for gravity main (sheet 2 of 2)
N	STD-WW-23	Typical bridge crossing for rising main (sheet 1 of 2)
N	STD-WW-24	Typical bridge crossing for rising main (sheet 2 of 2)
N	STD-WW-25	Security gate & fencing
N	STD-WW-26	Indicative pumping station layout
N	STD-WW-27	Flow meter chamber (foul rising main <200mm dia.)
N	STD-WW-28	Indicative submersible pumping station
Y	STD-WW-28A	Indicative pre-cast concrete submersible pumping station
Y	STD-WW-29	Rising main discharge manhole
N	STD-WW-30	Kiosk type 1 pumping station & wet kiosk (sheet 1 of 2)
N	STD-WW-31	Kiosk type 2 + 3 pumping station & wet kiosk (sheet 2 of 2)
N	STD-WW-32	Hardstanding area pumping station (permeable & impermeable)
N	STD-WW-33	Lamp bollard & lamp standard
Y	STD-WW-34	Vent stack



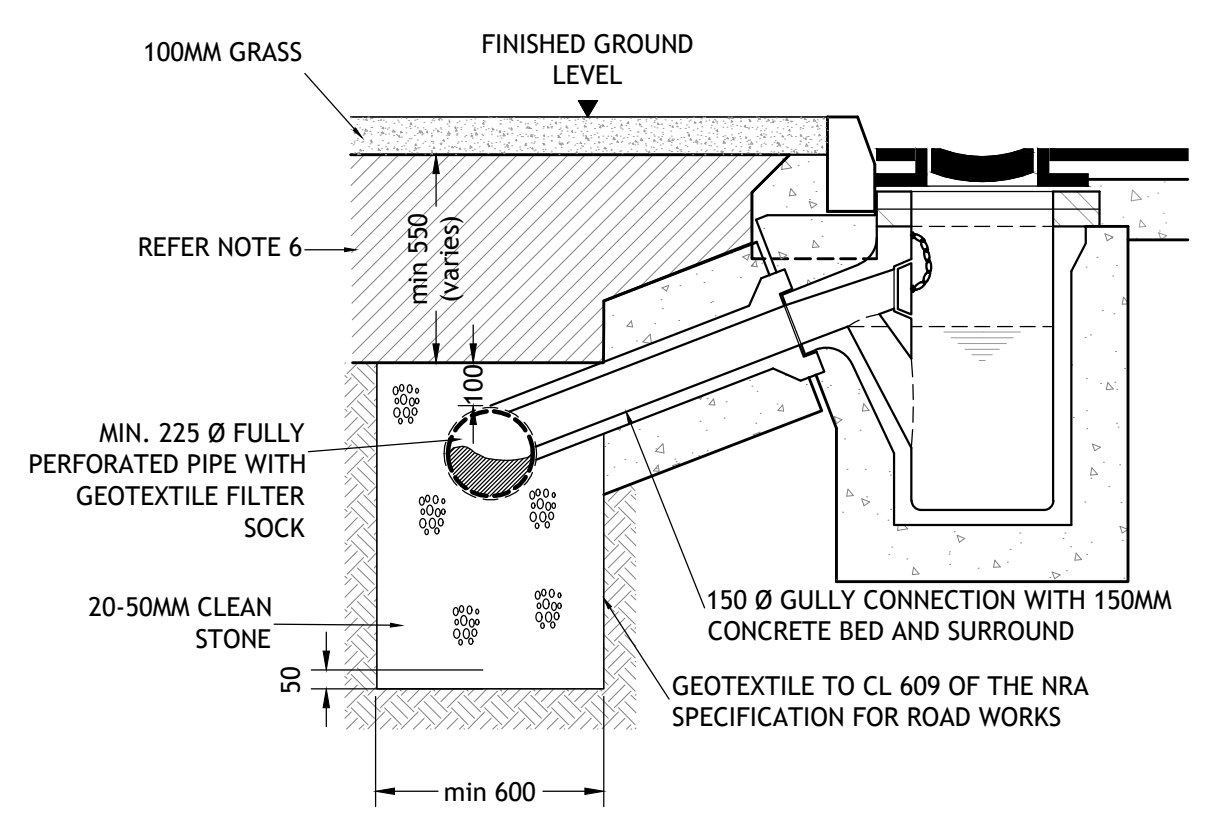
**ACO CHANNEL DETAIL**  
SCALE 1:20 @ A1



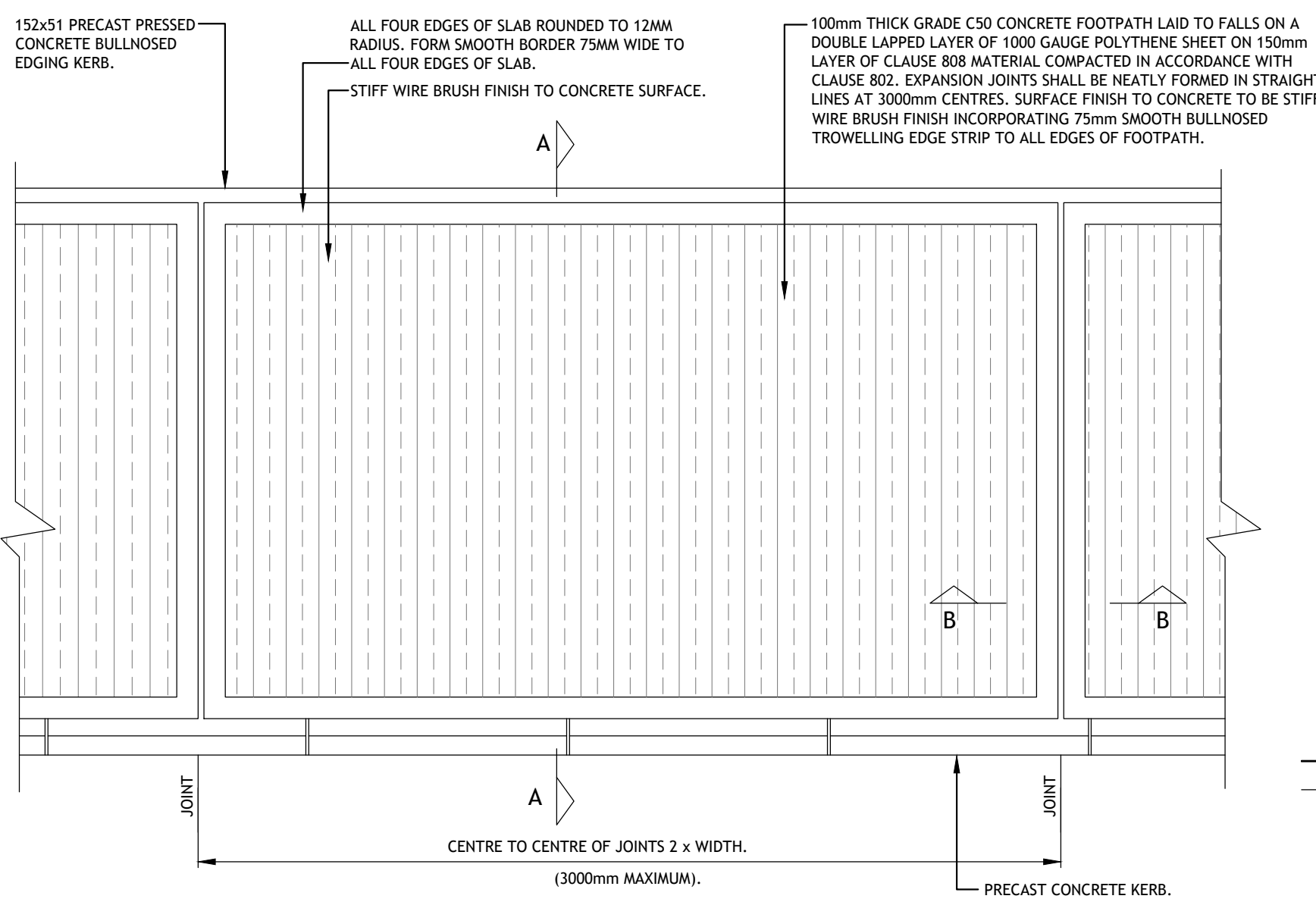
**GULLY IN SLAB**  
SCALE 1:20



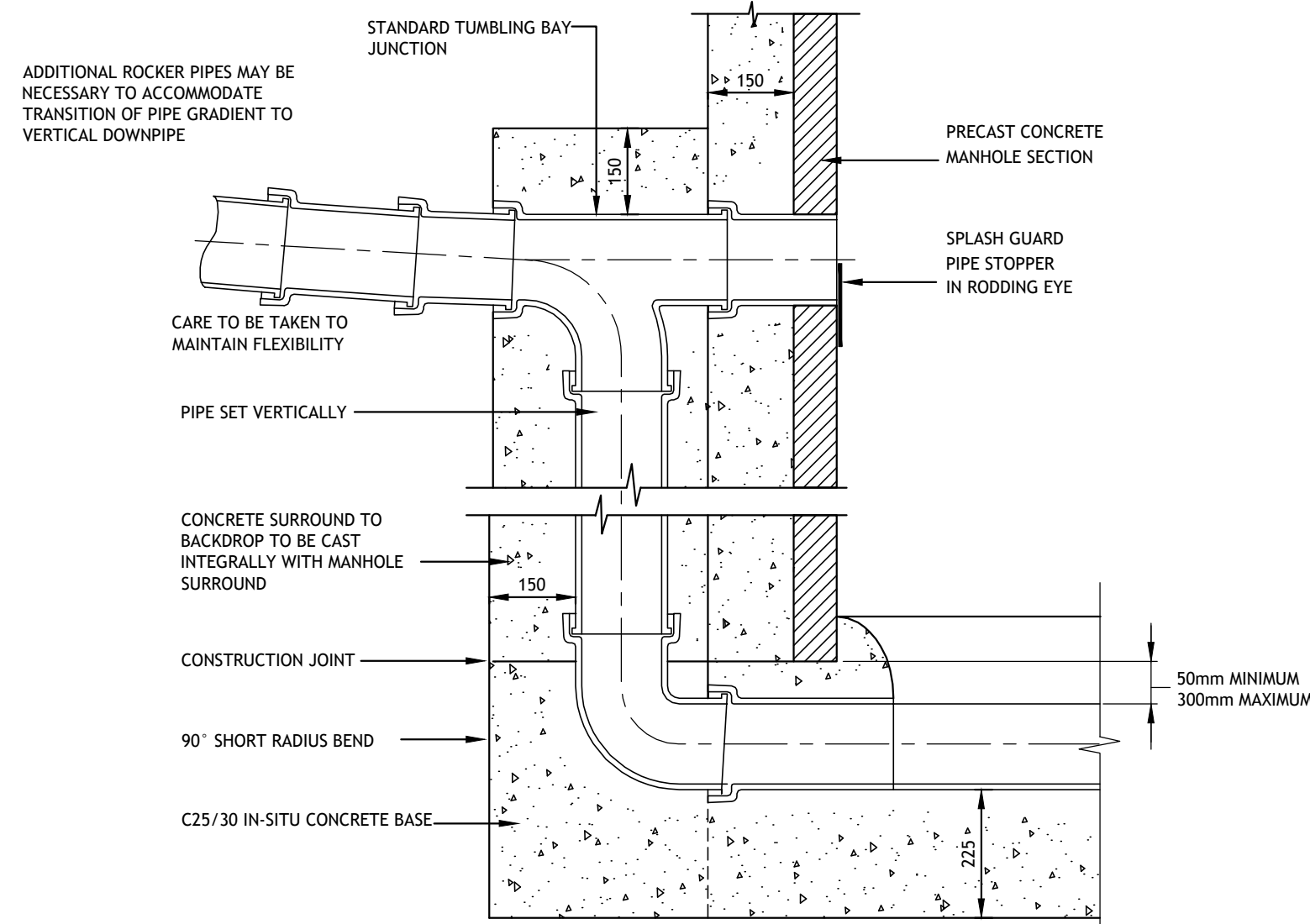
**SEALED WATERTIGHT uPVC TO THERMOPLASTIC SADDLE CONNECTION**  
NOT TO SCALE  
DRAIN LCR PIPE LINER - OPTION 1  
FLEXSEAL FLEXIBLE SADDLE - OPTION 2



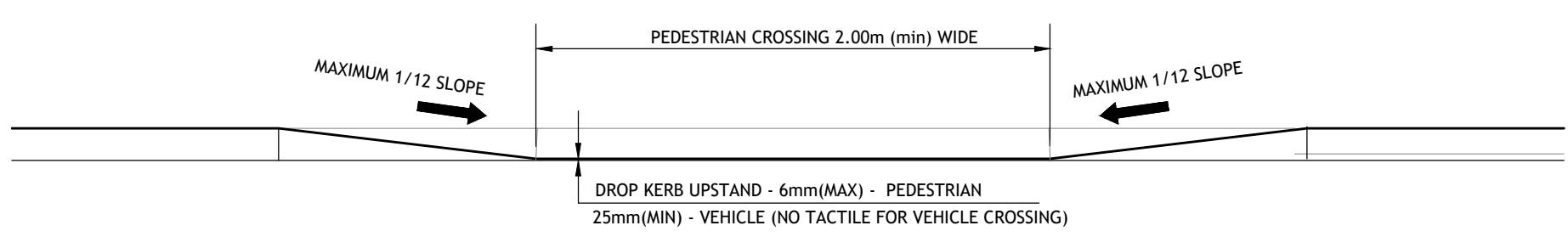
**GULLY TO FILTER TRENCH CONNECTION DETAIL**  
SCALE 1:20



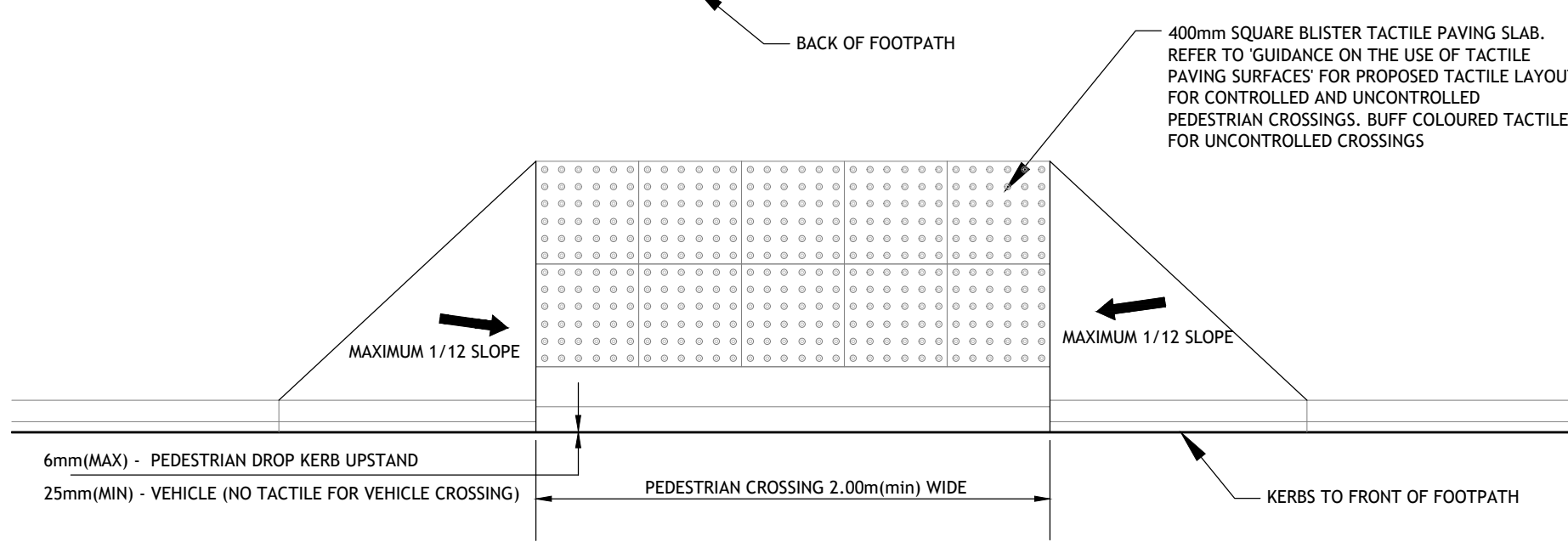
**PLAN-FOOTPATH DETAILS**  
SCALE: 1:20



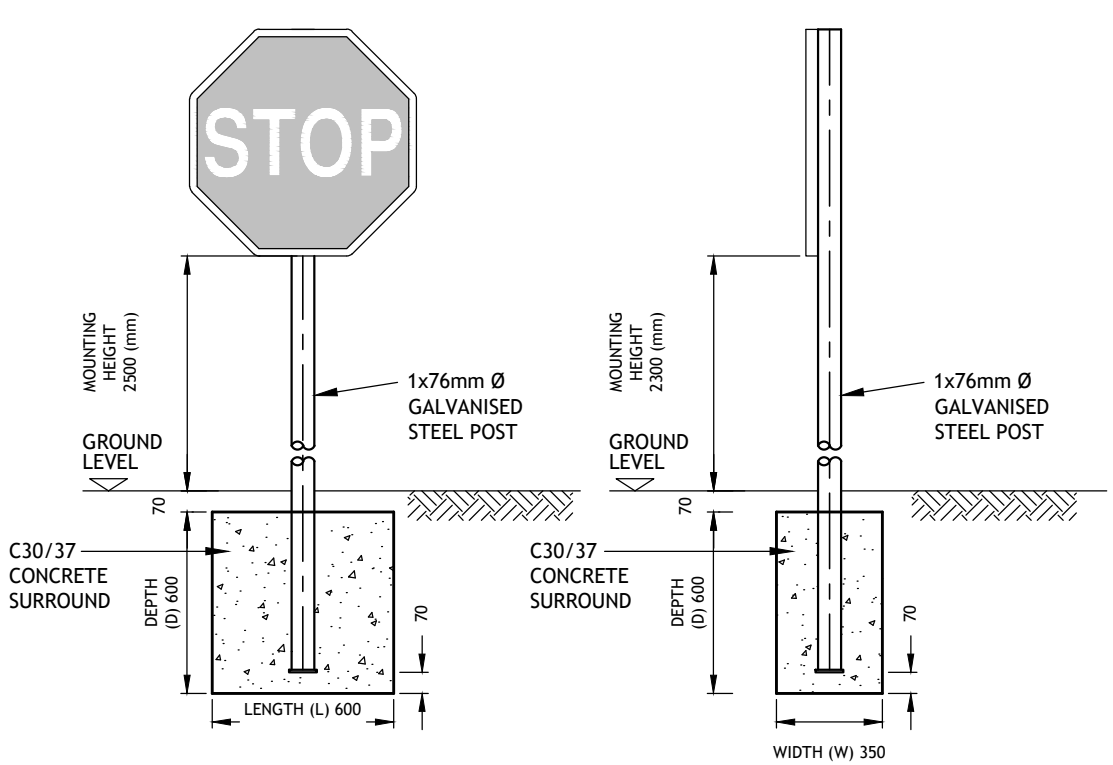
**TYPICAL VERTICAL BACKDROP DETAIL**  
NOT TO SCALE



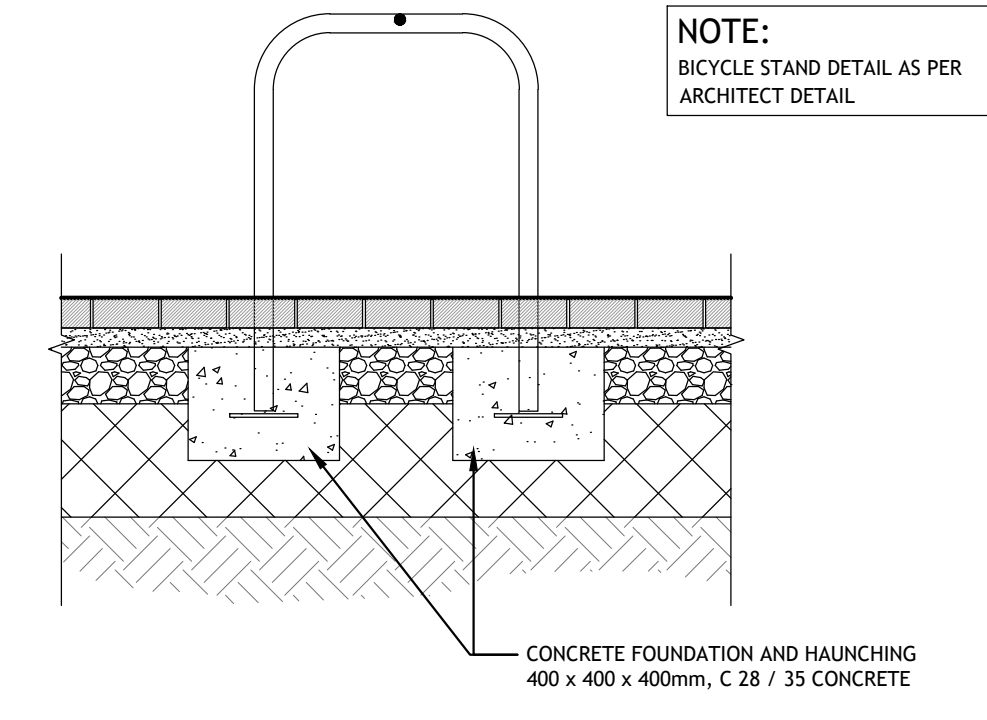
**TYPICAL ELEVATION OF DROPPED KERB (DK)**  
SCALE 1:25



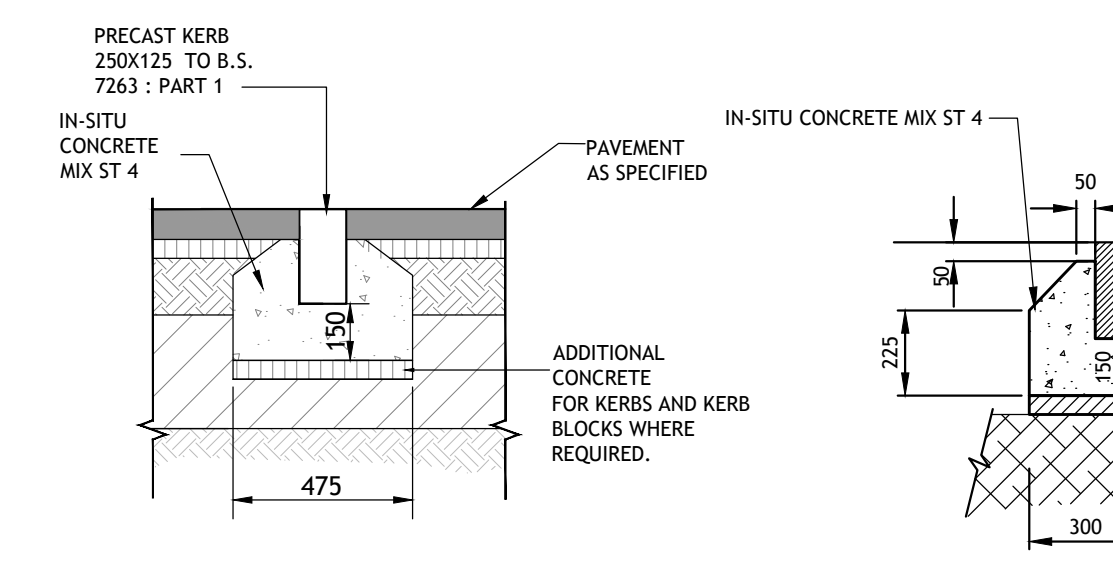
**TYPICAL PLAN OF DROPPED KERB (DK)**  
SCALE 1:25



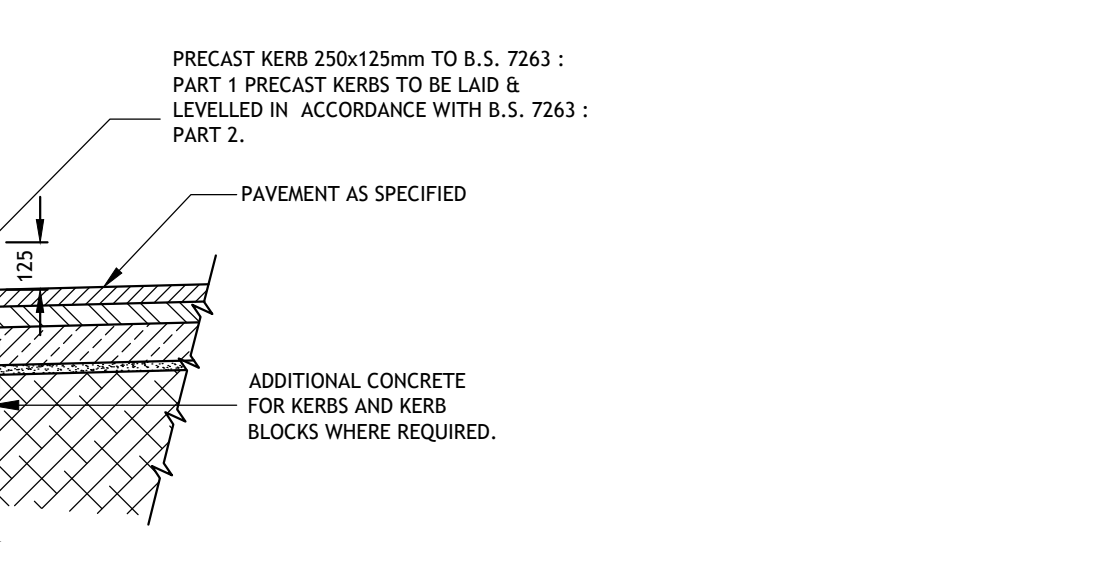
**TYPICAL SINGLE POST SIGN**  
Scale 1:25



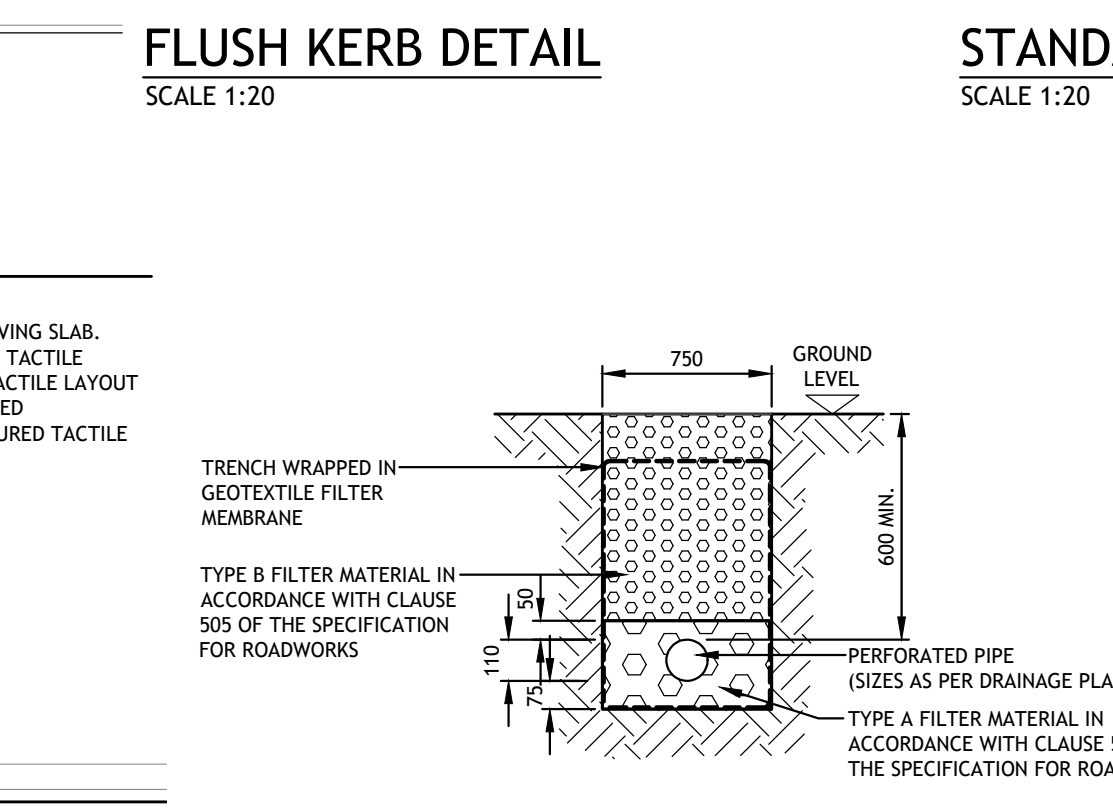
**BICYCLE STAND FOUNDATION DETAIL**  
SCALE 1:20



**FLUSH KERB DETAIL**  
SCALE 1:20



**STANDARD KERB DETAIL**  
SCALE 1:20



**FILTER DRAIN TYPICAL SECTION**  
NOT TO SCALE

**© PUNCH Consulting Engineers**  
This drawing and any design hereon is the copyright of the Consultants and must not be reproduced without their written consent.  
All drawings remain the property of the Consultants.  
Figured dimension only to be taken from this drawing.  
Consultants to be informed immediately of any discrepancies before work proceeds.

COLOUR DRAWING

Date Drawn:	2018-12-20
Drawn By:	IBS
Date Issued:	2020-07-31
Issued By:	JB

Rev	Amendment	By	Date
PL0	PLANNING ISSUE	IBS	2022/03/28

Client:  
**1 CARRICKMINES LAND LTD.**

Job: PRIORSLAND CHERRYWOOD SHD  
Title: TYPICAL CIVIL DETAILS - SHEET 1/7 - PERMANENT PROPOSAL  
**PUNCH** consulting engineers  
Dublin | Limerick | Cork | Galway | Glasgow  
Carnegie House, Library Road, Dun Laoghaire, Co. Dublin, A96 C7W7  
IRL: +353 1 271 2200 www.punchconsulting.com

Stage:	PLANNING
Scale @ A1:	AS NOTED
Technician Check:	IBS
Engineer Check:	MCD
Approving:	
Rev:	
182-186-070	PL0